

# COOL CAMPFIRES!

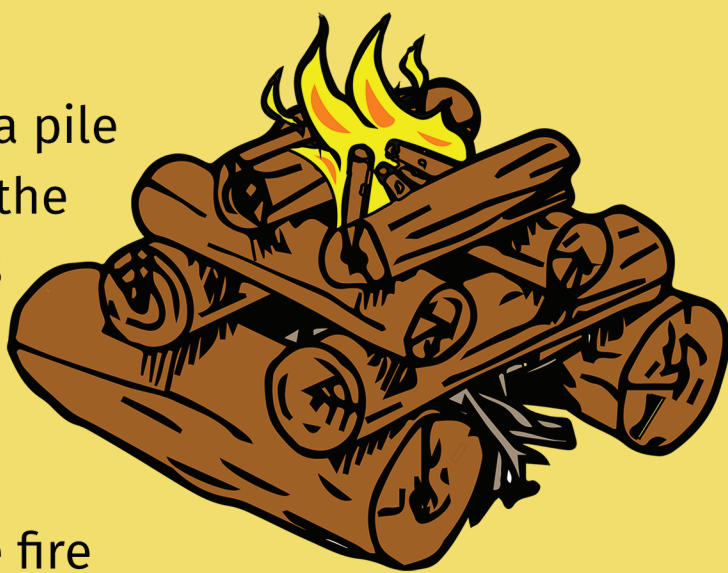
## HERE'S HOW TO SAFELY BUILD THREE KINDS OF CAMPFIRES:

### TEEPEE



Make a pile of tinder and arrange your kindling over it like poles of a teepee. Keep the teepee shape as you add more wood to the fire.

### CROSS FIRE



CROSS FIRE: Place a pile of tinder between the two parallel pieces of kindling. Once the fire is burning, lay more pieces of kindling across the fire perpendicular to the first pair. As you add larger sticks to the fire, make each new layer perpendicular to the last, building a pyramid shape.

### LOG CABIN



Surround your tinder with a square of kindling built by laying two sticks parallel on either side of the tinder, then two sticks on top of and perpendicular to the first pair. Build up several levels and end with a “roof” of small kindling across the top. Add larger sticks in pairs to keep the fire’s log cabin shape.



## Use this checklist to make sure your campfire is safe

### DO

- Get firewood where you use it.
- Make sure your campfire is a safe distance from your tent or anything that can burn.
- Keep your fire within a designated fire ring or surrounded by rocks.
- Light a fire only when an adult is present and in charge.
- Keep young children and pets away from the fire.
- Use the Drown-Stir-Drown-Feel method to put out your campfire safely.

### DON'T

- Don't start a campfire when it is windy.
- Don't use flammable liquids to start a campfire.
- Don't play or goof around near a campfire.
- Don't burn glass, cans, plastics, or garbage in your campfire.
- Don't leave a fire unattended.
- Don't leave your fire without first putting it completely out.
- Don't bury warm/hot coals or ashes in a campfire pit.
- Don't extinguish your campfire with just dirt or sand - add H<sub>2</sub>O!

